



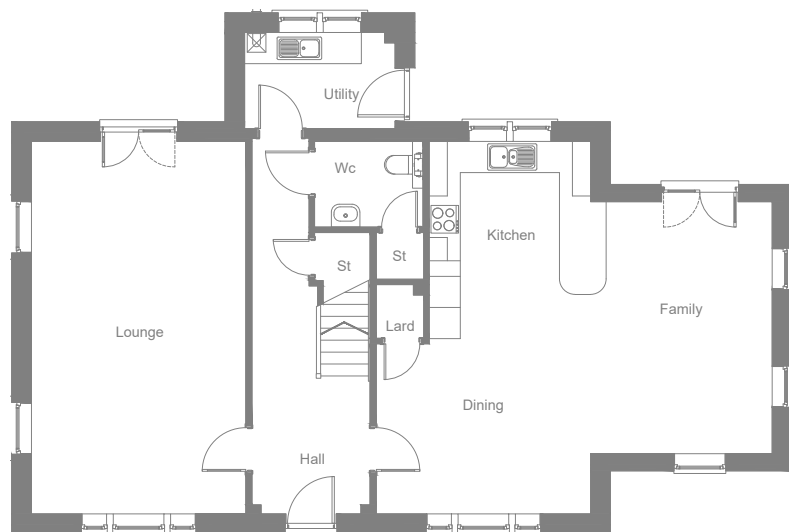
ARGYLL

4 Bedroom
Detached Home
with Double Garage

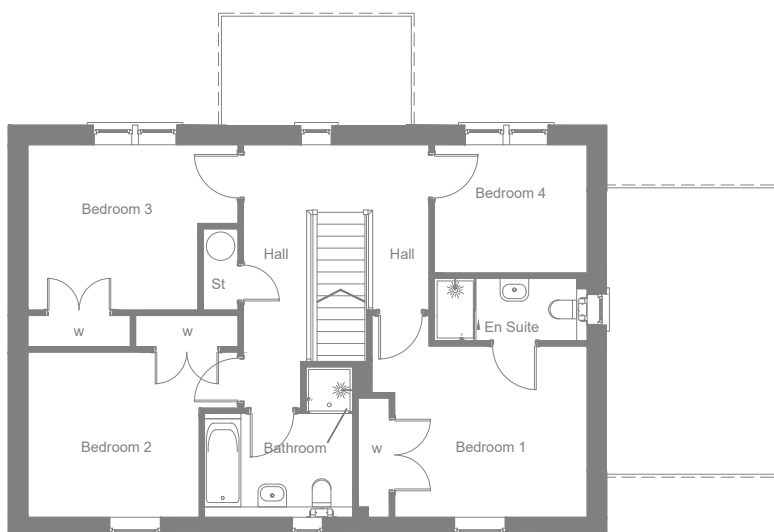


ajcscotland.com

GROUND FLOOR



FIRST FLOOR



GROUND FLOOR	METRES	FEET/INCHES
Lounge	4.13 x 7.17	13' 6" x 23' 6"
Kitchen/Dining**	4.13 x 7.17	13' 6" x 23' 6"
Family	3.50 x 4.85	11' 5" x 15' 10"
Utility	2.89 x 1.85	9' 5" x 6' 0"
WC	2.09 x 1.65	6' 10" x 5' 4"

Total Floor Area - 177.8m²

** Room Dimensions taken from widest point

FIRST FLOOR	METRES	FEET/INCHES
Bedroom 1**	4.14 x 3.88	13' 6" x 12' 8"
Bedroom 1 En Suite	2.94 x 1.20	9' 7" x 3' 11"
Bedroom 2**	4.05 x 3.18	13' 3" x 10' 5"
Bedroom 3**	4.05 x 3.18	13' 3" x 10' 5"
Bedroom 4	2.94 x 2.46	9' 7" x 8' 0"
Bathroom**	2.85 x 2.90	9' 4" x 9' 6"



AJC

HOMES

ARGYLL

4 Bedroom
Detached Home
with Double Garage

The information including the site layout shown in this document is intended for illustration purposes only and may change for example in response to market demand or ground conditions. Consequently, it should be treated as general guidance and cannot be relied upon as accurately describing any of the Specified Matters prescribed by any order made under Property Misdescription Act 1991. Nor do the contents constitute a contract, part of a contract or a warranty. Room sizes are approximate and may be subject to variation. Some features may vary. Speak to Sales Consultant regarding specific plot variations.

ajcscotland.com